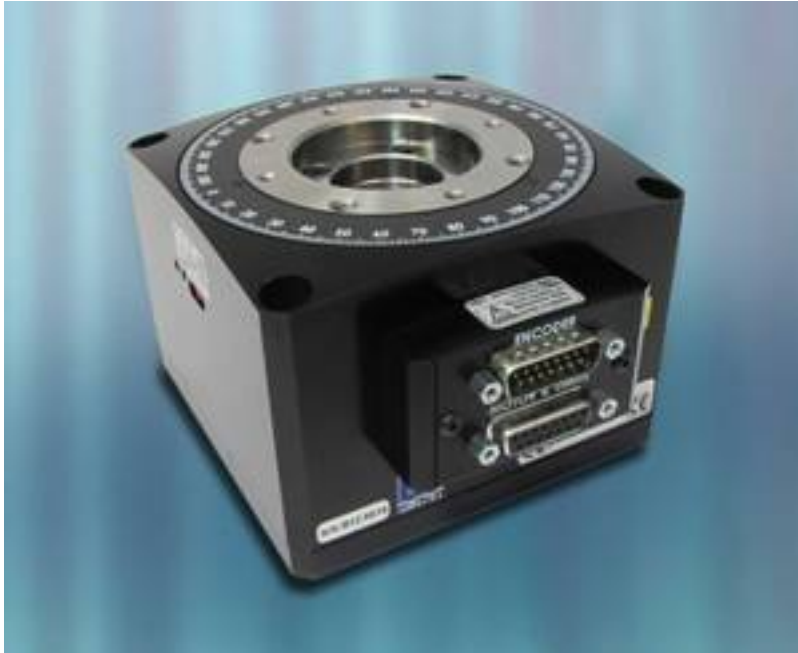


High-Speed Precision Rotation Stage for High Torque Applications



Newport Corporation, a worldwide leader in laser and photonic solutions that Make, Manage and Measure Light®, introduces the compact and high torque RGV100HL high-speed precision rotation stage. Developed to accelerate loads having higher rotational inertia, the new stage is compatible with Newport's XPS-DRV02 driver. The RGV100HL provides the same high resolution and outstanding positioning performance as Newport's legacy RGV100BL precision rotation stage while delivering 3X the torque and 5X the acceleration.

Direct-drive technology provides faster rotating speeds with superior reliability and enhanced positioning sensitivity. By integrating the bearings with the motor, the stage's footprint is only 115 mm x 115 mm. A precision glass scale encoder guarantees 0.0003 degrees repeatability and 0.0001 degree minimum incremental motion. The brushless DC torque motor with rare earth magnets optimizes the available torque to deliver extremely rapid point-to-point motions. Other features include 360-degree travel with 0.01° on-axis accuracy, a proprietary 4-point contact ball bearing design, and a 30-mm diameter through-hole for easy routing of cable and vacuum lines.

The robust RGV100HL is ideal for demanding applications requiring fast dynamic response and for tasks that require moving larger platens. It is perfectly suited for semiconductor wafer inspection and metrology, laser micromachining, micro-robotics, motion simulators, rate tables and simulators, sensor calibration, and MEMs production.

Newport Corporation

800-222-6440; www.newport.com [1]

High-Speed Precision Rotation Stage for High Torque Applications

Published on Medical Design Technology (<http://www.mdtmag.com>)

Source URL (retrieved on 03/09/2014 - 9:05am):

http://www.mdtmag.com/product-releases/2012/12/high-speed-precision-rotation-stage-high-torque-applications?qt-most_popular=0&qt-video_of_the_day=0

Links:

[1] <http://www.newport.com>