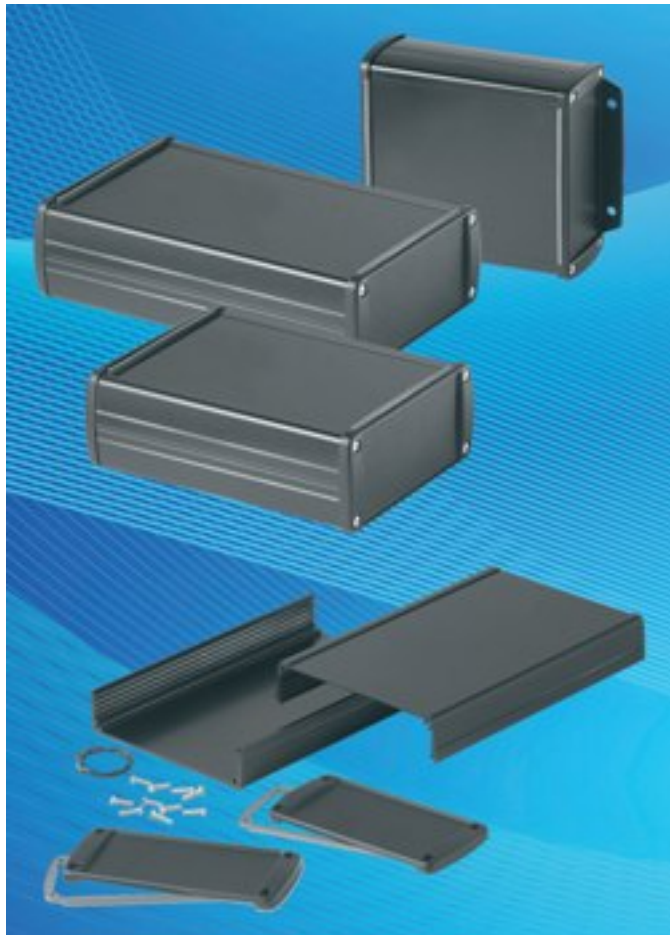


Two-Part Extruded Aluminum Enclosures

MDT Staff



Following customer demand, TEKO have extended the TEKAM series of extruded aluminum enclosures with the new TEKAM 3L models which feature two-part extrusion profiles for the case body.

Having a two-part body allows connectors, displays and switches fitted on the PCB to protrude through the top and base section – this is not possible on the single-part case body.

Each TEKAM 3L enclosure consists of a two-part case body with sealing rings, and two die cast end panels with molded gaskets. The cases are assembled by eight self-tapping screws. The case body extrusions include a series of internal guide rails for the slide-in PCBs. The all aluminum design provides good levels of RFI/EMI shielding.

Customers can specify the TEKAM 3L enclosures with flat end panels for hand held or portable use, or end panels with integrated wall mounting brackets. Two molded rubber gaskets are also included for sealing the mating faces of the end panels and case extrusions.

TEKAM 3L enclosures are available in three standard sizes: 4.29" x 1.93" in lengths

Two-Part Extruded Aluminum Enclosures

Published on Medical Design Technology (<http://www.mdtmag.com>)

of 4.37", 5.75" and 6.92". Two standard color combinations are offered: off-white with gray end panels or all black.

Recessed areas on both sides of the case extrusion, and on the front face of the end panels, can be used for mounting membrane keypads or product labels. The end panels can also be used for mounting RF antennas.

TEKO can supply the TEKAM 3L enclosures with additional holes for push-buttons, connectors and controls etc., plus silk-screen printed legends and logos. The cases can also be painted in alternative colors.

For more information, visit www.tekoenclosures.com [1].

Source URL (retrieved on 01/31/2015 - 2:27am):

http://www.mdtmag.com/product-releases/2013/03/two-part-extruded-aluminum-enclosures?qt-recent_content=0

Links:

[1] <http://www.tekoenclosures.com>